

CONTINUED FROM MC. 18-20
PAGE # 20

10-22-74

FIELD W. MALAN NOTES

SCOTT SPRUNT

of CARL HOLMES

Ph. 394-8893

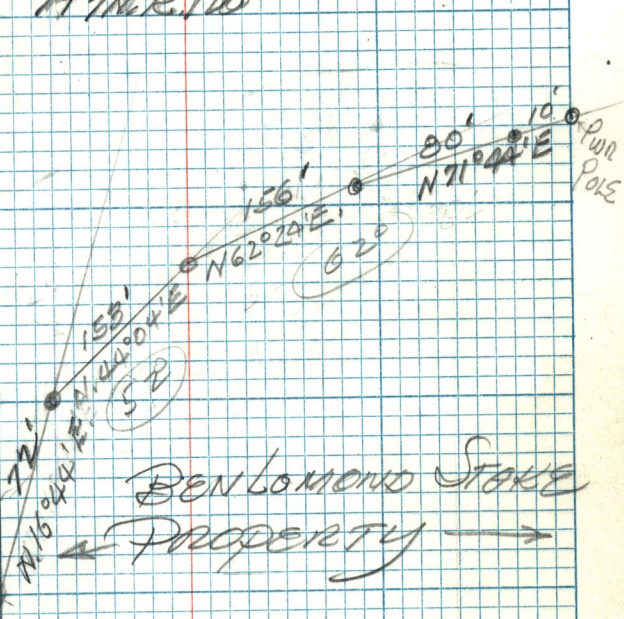
(WEBER Co. SCHOOLS

N/4 COR. SEC. 12

T1N.R.1W

Webber County Park
North Fork Park

1730' SOUTH



BEN LOMMONO STAKE
PROPERTY →